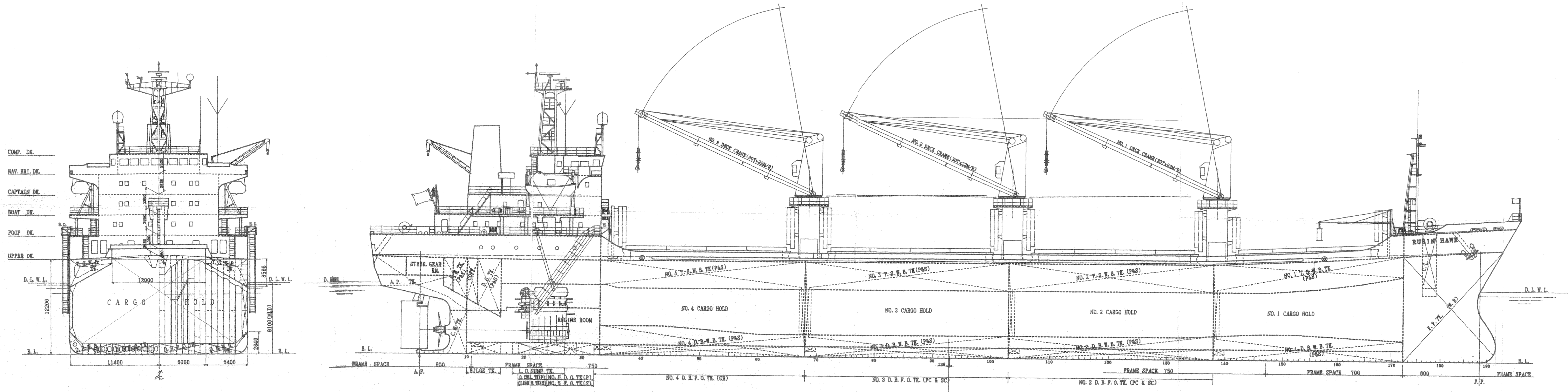


BIBLIOGRAPHY

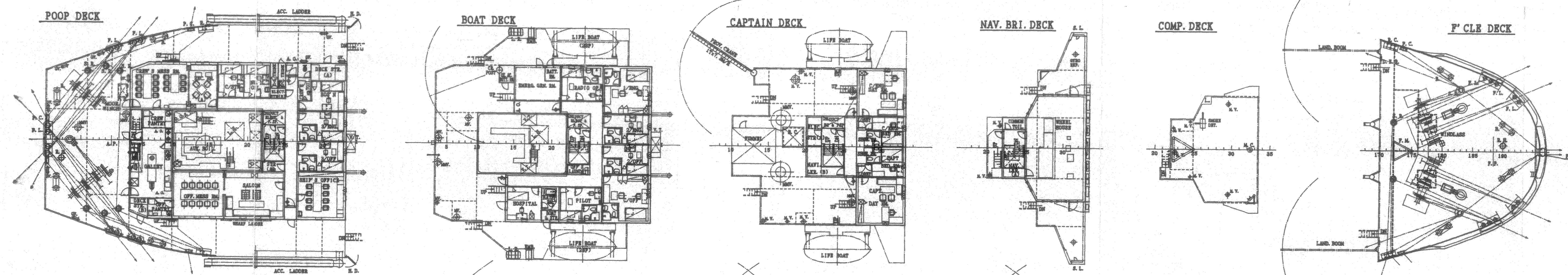
1. 21ST FEB. 1984  
THIS PLAN IS PREPARED FOR S. 874/875 CONTRACT.  
2. 28TH APR. 1984  
DESIGNED BY THE BUILDERS DESIGN STUDY.  
3. 19TH AUG. 1984 (REVISED NO. 1)  
THIS PLAN HAS BEEN MODIFIED BY THE OWNER'S COMMENTS AND THE BUILDER'S DESIGN STUDY AFTER.  
4. 21ST MAR. 1985  
THIS PLAN IS FINALLY ADJUSTED AS FINAL PLAN OF S. 874

# GENERAL ARRANGEMENT

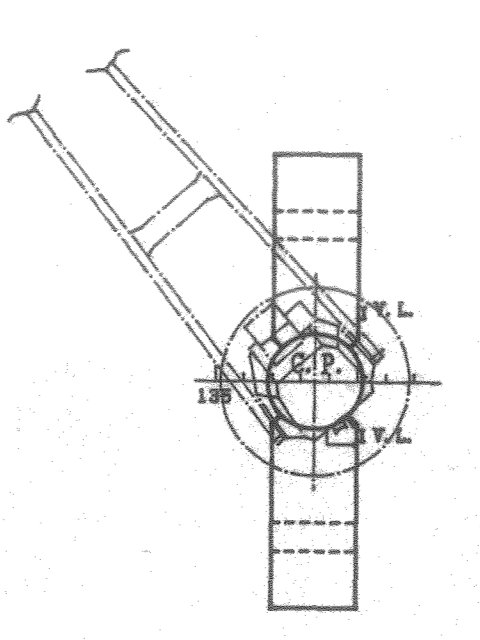
## SCALE 1:200



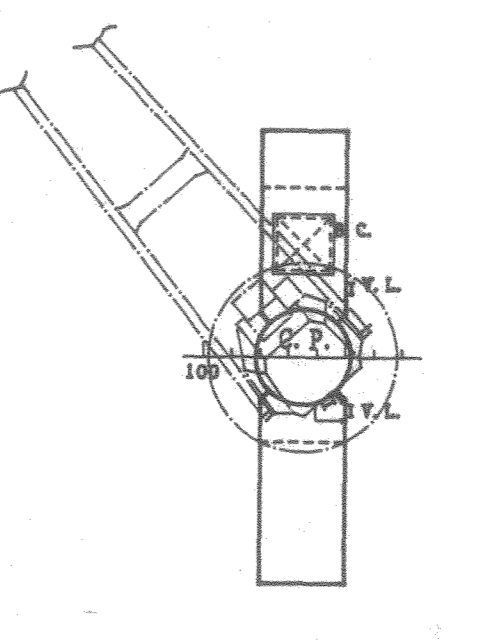
MIDSHIP SECTION



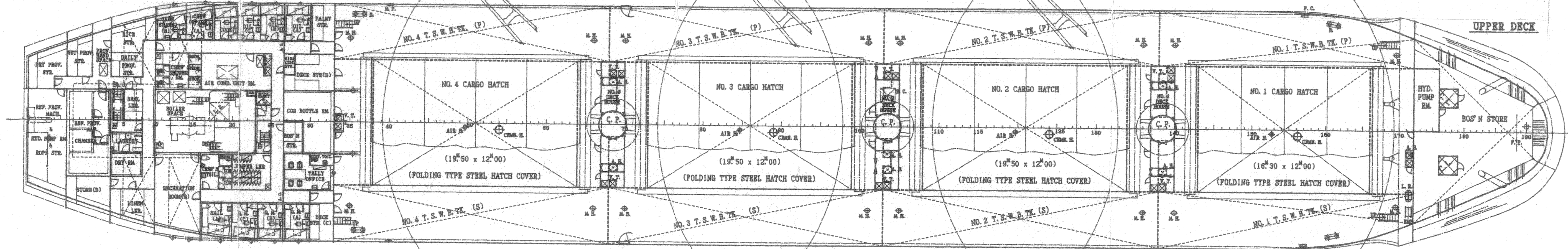
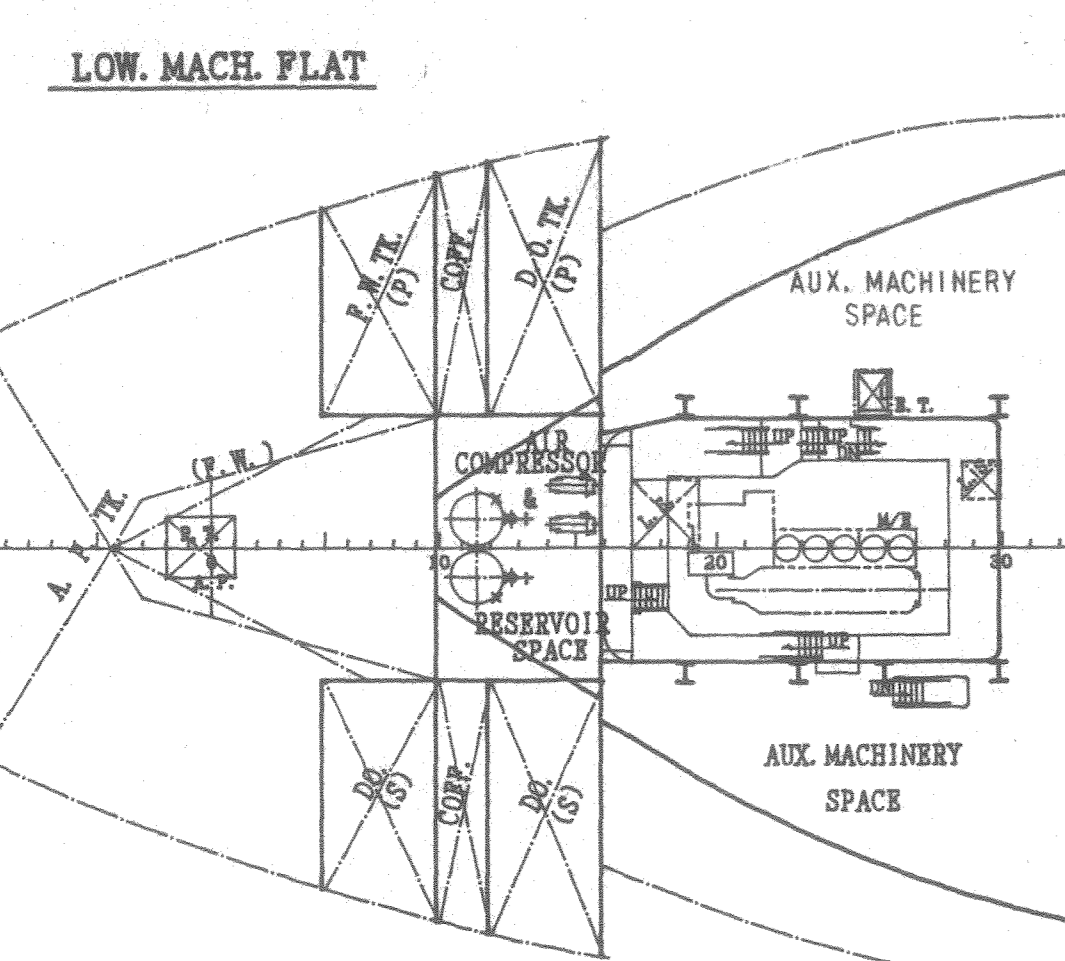
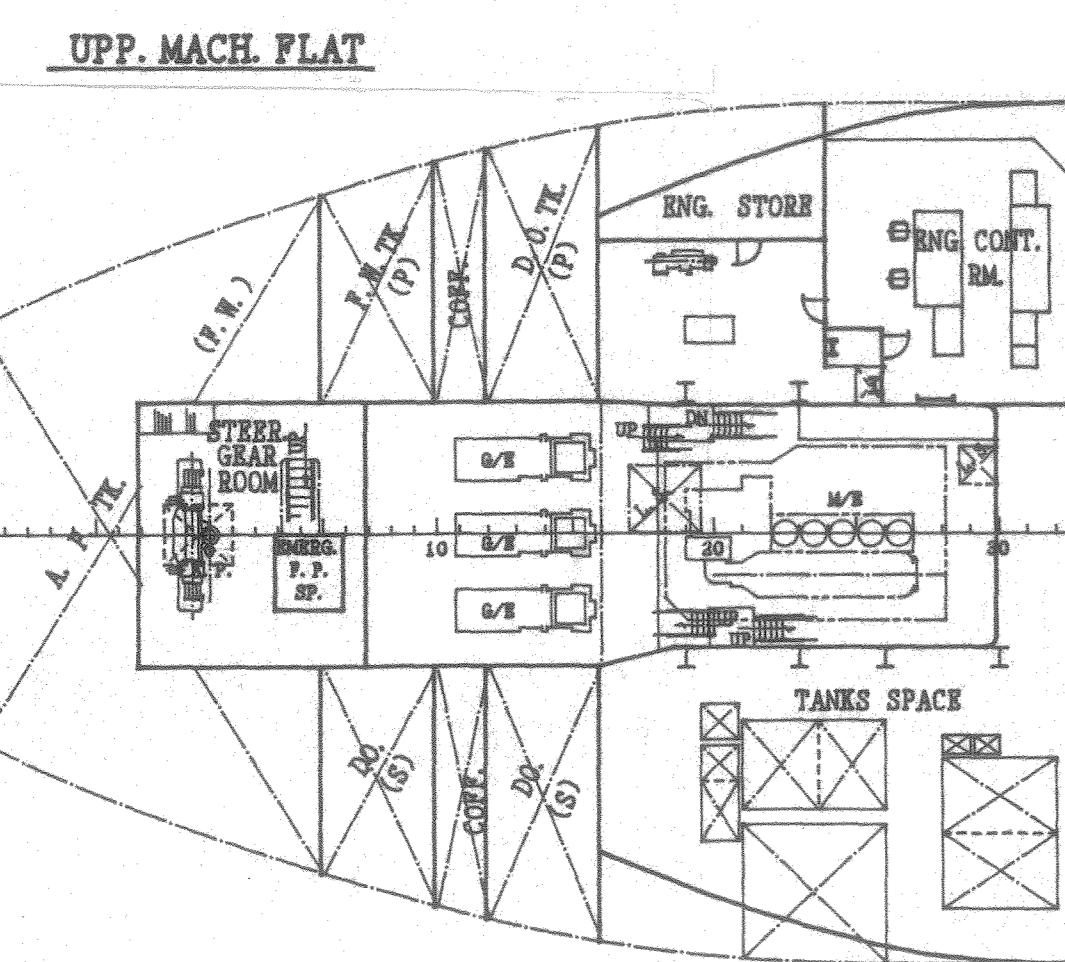
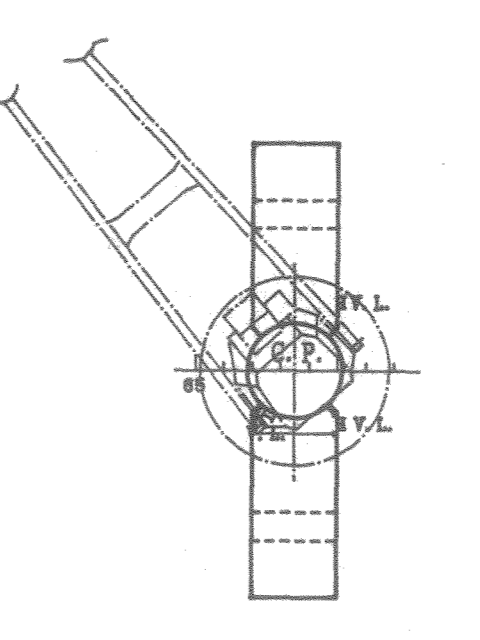
NO. 1 DECK HOUSE TOP



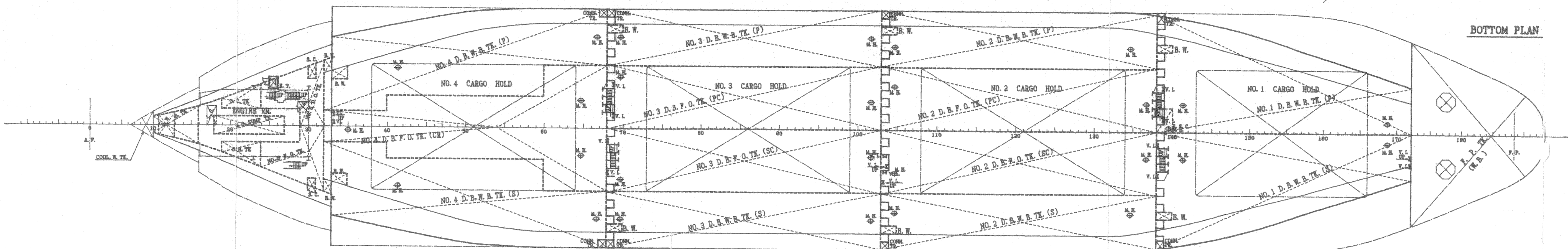
NO. 2 DECK HOUSE TOP



NO. 3 DECK HOUSE TOP



UPPER DECK



BOTTOM PLAN

PRINCIPAL PARTICULARS		
1. PRINCIPAL DIMENSIONS		
LENGTH (O.A.)	148.17 m	
LENGTH (P.P.)	135.95 m	
BREADTH (MID.)	22.90 m	
DEPTH (MID.)	12.20 m	
DISPOSD DRAFT (MID.)	8.18 m	
2. TONNAGE CLASS		
GROSS TONNAGE	17,284 Tons	
CLASS	REG. HULL CARRIER, HULL	
3. DEADWEIGHT		
DEADWEIGHT	18,233 tonnes	
4. MAIN ENGINE		
TYPE NO.	MITSUBI-MAR BAN SL40C x 1 SET	
M.C.R. @ 775 RPM (4.08REV)	x 176 RPM	
C.E.R. @ 104 RPM (4.68REV)	x 170 RPM	
5. SPEED		
PULL LOAD CONDITION BY C.S.B. WITH 15K S.W.		
SEA TRIAL MAX. SPEED	15.53 knots	
6. COMPLIANT		
DECK	ENGINE	BULLNESS
CAPTAIN	1	CRIP ENG. 1
CHIEF OFF.	1	1ST ENG. 1
2ND OFF.	1	2ND ENG. 1
3RD OFF.	1	3RD ENG. 1
OFFICER TOTAL		4
BOAT'S	NO. 1 BILGE	1
G.H.	3	3
SAILOR	1	1
PILOT	(SENIOR OFFICER CLASS)	1
CREW SPARE (RATING CLASS)		2
OTHER TOTAL		2
GRAND TOTAL		23 PERSONS

FINAL DRAWING

SHIKOKU DOCKYARD CO. LTD.

**M.V. ECO PROSPERITY**

DESIGN DEPARTMENT: S. 874  
 MANAGER: G00  
 DIMENSIONS: D.W. 18.100 M. TONS TYP. BULK CARRIER

**GENERAL ARRANGEMENT**

SCALE: 1/200  
 DRAWING NO.: G 0003  
 SHIKOKU DOCKYARD CO., LTD.  
 GF-3