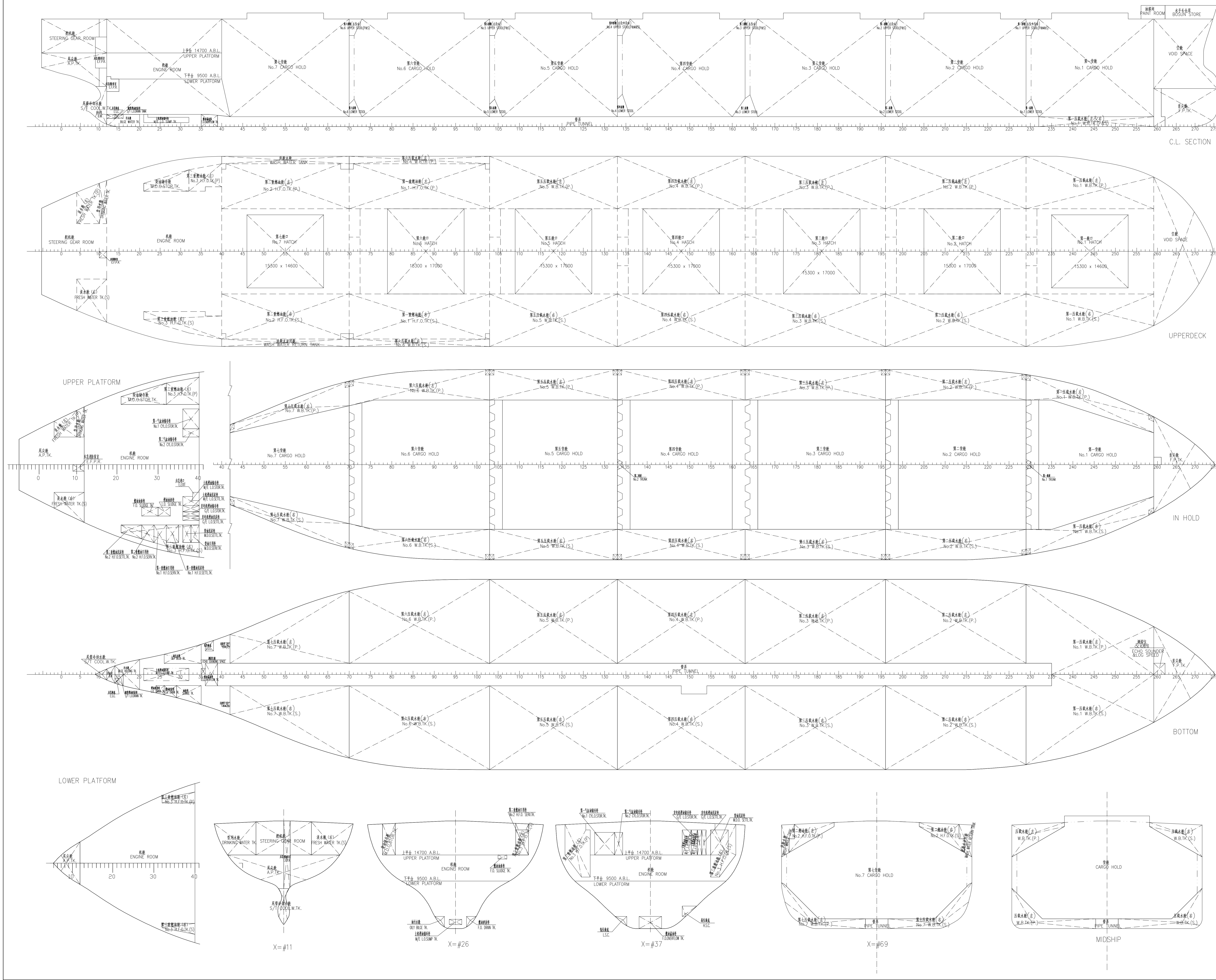


1002*101*0211030	3033
	3033

日期	版本	标记	描述	设计	校对	审核
2010-12-10	0		初步设计	陈楠	吴伟	吴伟
2011-06-20	FINAL		设计完成, 准备交付	陈楠	吴伟	吴伟



NAME	FR	VOLM (m ³)	WNET (m ³)	CGX (m)	CGY (m)	CGZ (m)	YMAX (m)
CAPACITY OF Grain load							
No.1 CARGO HOLD	#229~#250	13888.2	13759.2	205.04	-0.00	11.71	84.579
No.2 CARGO HOLD	#196~#220	17303.1	17170.1	179.11	0.00	11.37	126.882
No.3 CARGO HOLD	#163~#195	17764.4	17631.4	171.01	0.00	11.37	126.882
No.4 CARGO HOLD	#130~#162	15558.1	15425.1	174.19	0.00	11.48	115.530
No.5 CARGO HOLD	#103~#129	15717.4	15584.4	198.74	0.00	11.40	115.529
No.6 CARGO HOLD	#70~#99	17303.6	17170.6	172.04	-0.00	11.37	126.880
No.7 CARGO HOLD	#40~#69	14447.9	14304.4	144.40	0.00	11.99	116.648
TOTAL		111512.6	110397.4	125.07	0.00	11.52	

NAME	FR	VOLM (m ³)	WNET (m ³)	CGX (m)	CGY (m)	CGZ (m)	YMAX (m)
CAPACITY OF Water Ballast (RHO=1.025t/m ³)							
No.1 W.B.TK (P)	#229~#250	1859.9	1827.6	204.36	11.86	9.20	71.99
No.2 W.B.TK (P)	#196~#220	2445.4	2413.1	178.41	13.77	9.26	106.73
No.3 W.B.TK (S)	#163~#195	2445.4	2413.1	178.41	13.77	9.26	106.73
No.4 W.B.TK (P)	#130~#162	2445.4	2413.1	178.41	13.77	9.26	106.73
No.5 W.B.TK (P)	#103~#129	2445.4	2413.1	178.41	13.77	9.26	106.73
No.6 W.B.TK (P)	#70~#99	2445.4	2413.1	178.41	13.77	9.26	106.73
No.7 W.B.TK (S)	#40~#69	2445.4	2413.1	178.41	13.77	9.26	106.73
TOTAL		29811.3	29215.1	133.62	0.00	8.24	

NAME	FR	VOLM (m ³)	WNET (m ³)	CGX (m)	CGY (m)	CGZ (m)	YMAX (m)
CAPACITY OF Fresh Water (RHO=1t/m ³)							
FRESH WATER TK #4~#10		175.1	171.6	5.37	8.59	18.19	142
FRESH WATER TK #11~#17		245.5	240.6	6.20	-8.76	18.17	218
DRINKING WATER TK #18~#20		70.4	69.0	8.26	3.17	18.12	73
S/T COOL.W.TK #21~#27		244.4	244.4	0.00	-13.14	17.20	4
TOTAL		515.4	505.1	6.27	-0.00	17.51	

NAME	FR	VOLM (m ³)	WNET (m ³)	CGX (m)	CGY (m)	CGZ (m)	YMAX (m)
CAPACITY OF Heavy Fuel Oil (RHO=0.95t/m ³)							
No.1 H.F.O.TK (P)	#70~#103	789.2	783.3	71.43	14.10	19.04	1635
No.2 H.F.O.TK (P)	#40~#69	721.9	707.4	44.64	14.09	19.03	1502
No.3 H.F.O.TK (S)	#40~#69	288.3	284.2	44.64	14.09	19.03	1502
No.4 H.F.O.TK (S)	#21~#39	43.0	43.0	14.41	13.88	17.20	15
No.5 H.F.O.TK (S)	#21~#39	39.0	39.0	14.41	13.88	17.20	7
No.6 H.F.O.TK (S)	#21~#39	43.3	42.4	26.61	13.78	17.20	9
No.7 H.F.O.TK (S)	#21~#39	44.9	44.0	26.61	13.14	17.20	4
TOTAL		3726.1	3651.5	52.88	-0.39	18.57	

NAME	FR	VOLM (m ³)	WNET (m ³)	CGX (m)	CGY (m)	CGZ (m)	YMAX (m)
CAPACITY OF Diesel Oil (RHO=0.85t/m ³)							
M.O.D.STOR. TK #21~#27		165.0	161.7	21.57	13.58	17.83	26
M.O.D.SERV. TK #28~#34		28.9	28.3	31.14	13.78	17.20	6
M.O.SETTL. TK #35~#38		28.9	28.3	29.50	13.78	17.20	6
TOTAL		222.7	218.3	23.84	6.49	17.66	

NAME	FR	VOLM (m ³)	WNET (m ³)	CGX (m)	CGY (m)	CGZ (m)	YMAX (m)
CAPACITY OF Lubricating Oil (RHO=0.9t/m ³)							
No.1 OIL STOR. TK #36~#40		58.6	57.4	30.32	9.16	16.95	17
No.2 OIL STOR. TK #41~#45		24.2	23.7	30.32	6.35	16.95	1
No.3 OIL STOR. TK #46~#49		14.4	14.1	30.32	-9.82	17.20	0
No.4 OIL STOR. TK #50~#54		14.4	14.1	30.32	-10.70	17.20	0
M.O.D.STOR. TK #55~#59		24.5	24.0	30.10	-7.37	17.20	1
M.O.D.SETTL. TK #60~#64		19.9	19.9	30.32	-8.77	17.20	0
TOTAL		156.0	152.9	30.29	0.25	17.07	

NAME	FR	VOLM (m ³)	WNET (m ³)	CGX (m)	CGY (m)	CGZ (m)	YMAX (m)
CAPACITY OF Miscellaneous (RHO=1t/m ³)							
B.W. (P)	#40~#62	1.2	1.2	32.75	5.94	1.62	0
B.W. (S)	#40~#62	1.2	1.2	32.75	-5.94	1.62	0
B.W.	#12~#16	4.2	4.2	9.88	0.00	2.01	4
BULK HOLDING TK #17~#20		45.3	44.4	13.21	0.07	1.36	52
F.O. SLUDGE TK #26~#30		4.6	4.5	22.12	-9.38	14.30	1
F.O.DRYFLOW TK #31~#35		28.8	28.7	29.75	-0.05	7.19	19
L.O. SLUDGE TK #36~#39		3.5	3.4	24.99	-9.38	14.30	1
M.O.L.O.SIMP. TK #21~#32		25.0	24.5	20.69	0.00	1.36	12
OILY BR. TK #23~#25		34.9	34.5	24.71	3.42	1.51	24
SLUDGE TK #26~#29		26.9	26.3	28.62	-3.52	1.49	20
F.O. DRAIN TK #42~#49		8.3	8.2	21.79	-3.10	1.69	3
L.O. DRAIN TK #50~#59		4.0	3.9	19.70	-2.91	1.67	1
S/T L.O.DRAIN TK #14~#16		2.1	2.1	11.66	-0.88	2.00	1
TOTAL		190.3	186.5	21.68	-0.46	1.97	

- NOTE: 说明
1) T.C.G. (-) Starboard side, (+) Port side
2) Origin coordinate of L.C.G. is located in frame Q(A.P.)
2) 重心坐标的符号: 右舷为负, 左舷为正
2) 重心坐标的基准点: O(轴心), 船中 (艀)

NAME	FR	VOLM (m ³)	WNET (m ³)	CGX (m)	CGY (m)	CGZ (m)	YMAX (m)
CAPACITY OF Miscellaneous (RHO=1t/m ³)							
No.1 W.B.TK (P)	#70~#103	789.2	783.3	71.43	14.10	19.04	1635
No.2 W.B.TK (P)	#40~#69	721.9	707.4	44.64	14.09	19.03	1502
No.3 W.B.TK (S)	#40~#69	288.3	284.2	44.64	14.09	19.03	1502
No.4 W.B.TK (S)	#21~#39	43.0	43.0	14.41	13.88	17.20	15
No.5 W.B.TK (S)	#21~#39	39.0	39.0	14.41	13.88	17.20	7
No.6 W.B.TK (S)	#21~#39	43.3	42.4	26.61	13.78	17.20	9
No.7 W.B.TK (S)	#21~#39	44.9	44.0	26.61	13.14	17.20	4
TOTAL		3726.1	3651.5	52.88	-0.39	18.57	

NAME	FR	VOLM (m ³)	WNET (m ³)	CGX (m)	CGY (m)	CGZ (m)	YMAX (m)
CAPACITY OF Miscellaneous (RHO=1t/m ³)							
No.1 W.B.TK (P)	#70~#103	789.2	783.3	71.43	14.10	19.04	1635
No.2 W.B.TK (P)	#40~#69	721.9	707.4	44.64	14.09	19.03	1502
No.3 W.B.TK (S)	#40~#69	288.3	284.2	44.64	14.09	19.03	1502
No.4 W.B.TK (S)	#21~#39	43.0	43.0	14.41	13.88	17.20	15
No.5 W.B.TK (S)	#21~#39	39.0	39.0	14.41	13.88	17.20	7
No.6 W.B.TK (S)	#21~#39	43.3	42.4	26.61	13.78	17.20	9
No.7 W.B.TK (S)	#21~#39	44.9	44.0	26.61	13.14	17.20	4
TOTAL		3726.1	3651.5	52.88	-0.39	18.57	

船名	HULL NO.	93,0001	船类	CDSC	DC071204,103,2001
船型	CLASS	BV	93,0001 Bulk Carrier	CODE	
设计	DESIGNED	陈楠	2011.06.28	审核	吴伟
校核	CHECKED	吴伟	2011.06.28	设计	陈楠
审核	REVIEWED	吴伟	2011.06.28	校核	陈楠
标准	STANDARDIZED	陈楠	2011.06.28	审核	吴伟
批准	APPROVED	吴伟	2011.06.28	批准	陈楠