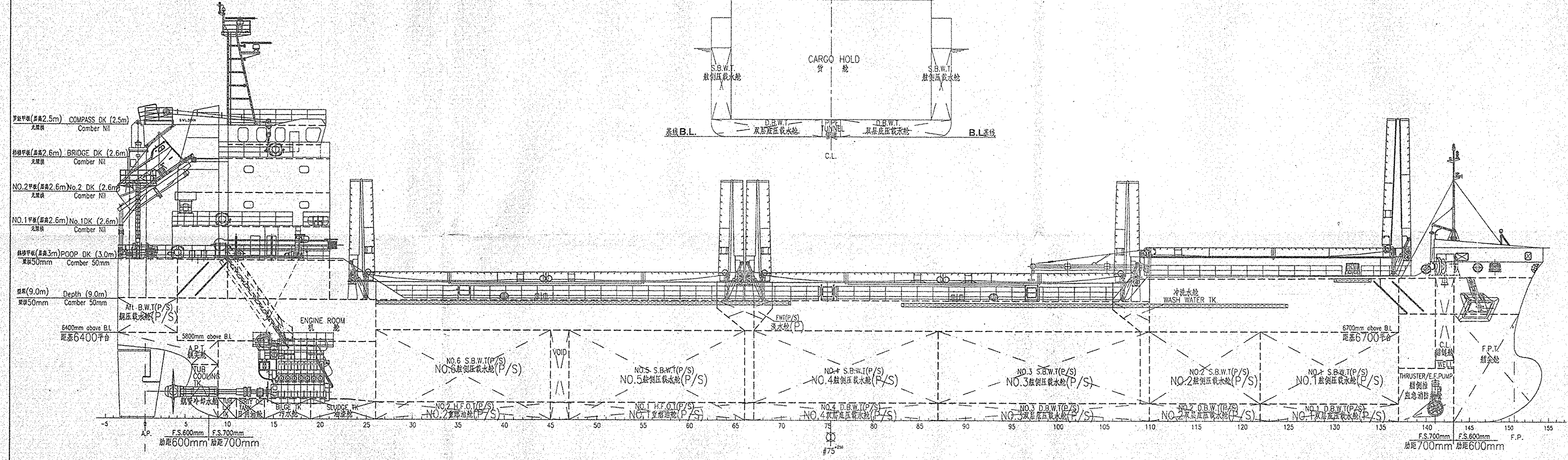
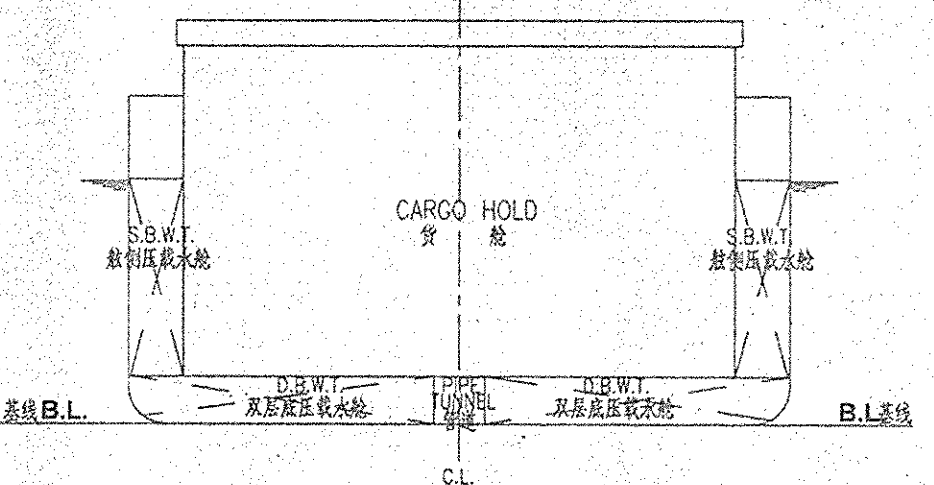


M20111.100.002

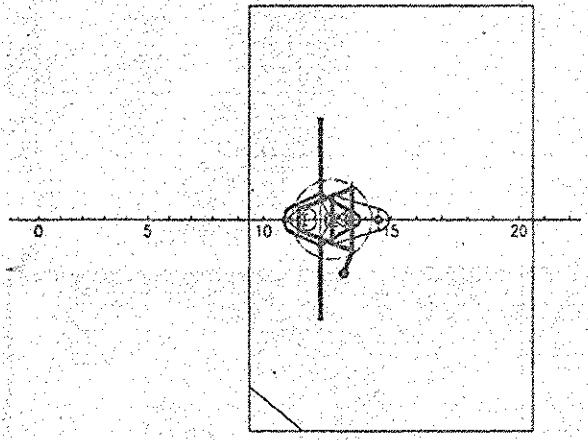
MID. SECTION  
船中剖面



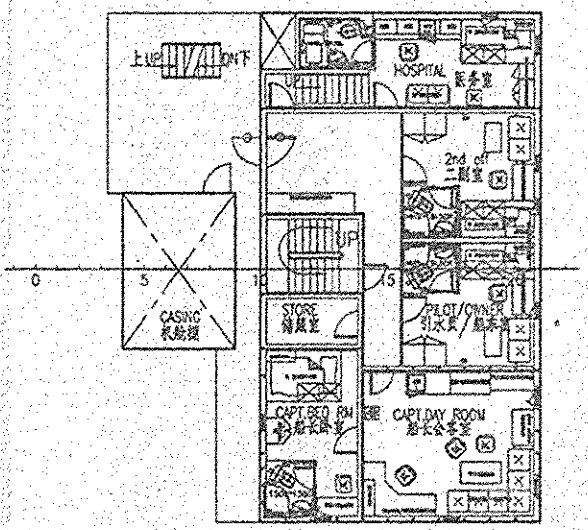
MAIN DIMENSIONS  
主要尺度

总长	LENGTH OVER ALL	~108.20m
垂线间长	LENGTH BETWEEN PERPENDICULARS	103.90m
型宽	BREADTH MOULDED	18.20m
型深	DEPTH MOULDED	9.00m
设计吃水	DRAUGHT DESIGN	5.50m
结构吃水	DRAUGHT SCANTL	6.82m

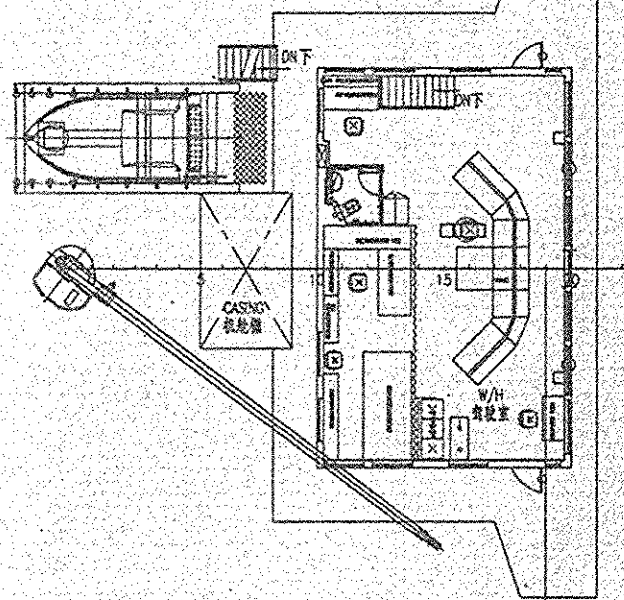
COMPASS DECK  
罗经甲板



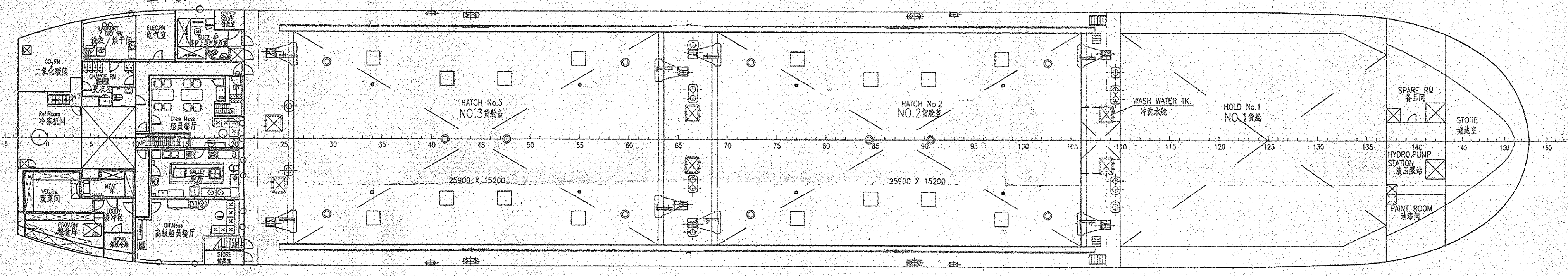
NO.2 DECK  
NO.2甲板



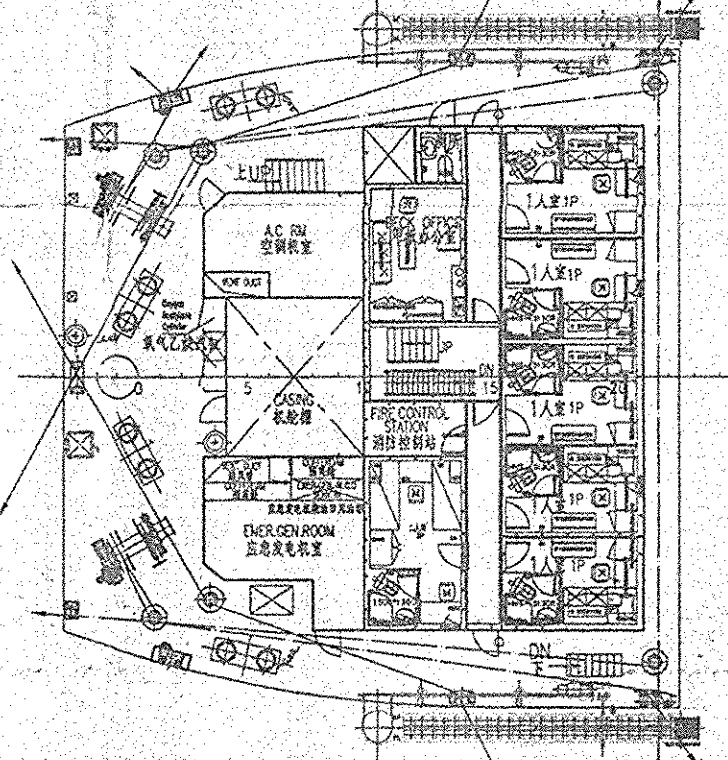
BRIDGE DECK  
桥楼甲板



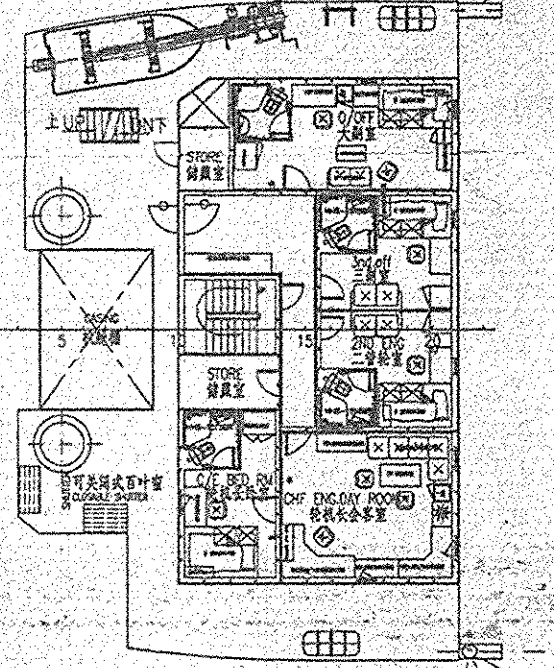
MAIN DECK  
主甲板



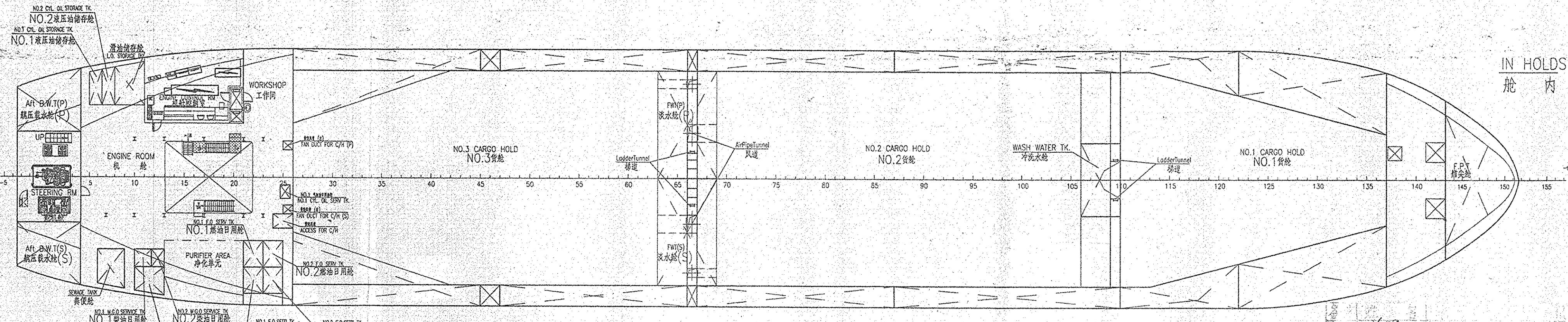
POOP DECK  
艉楼甲板



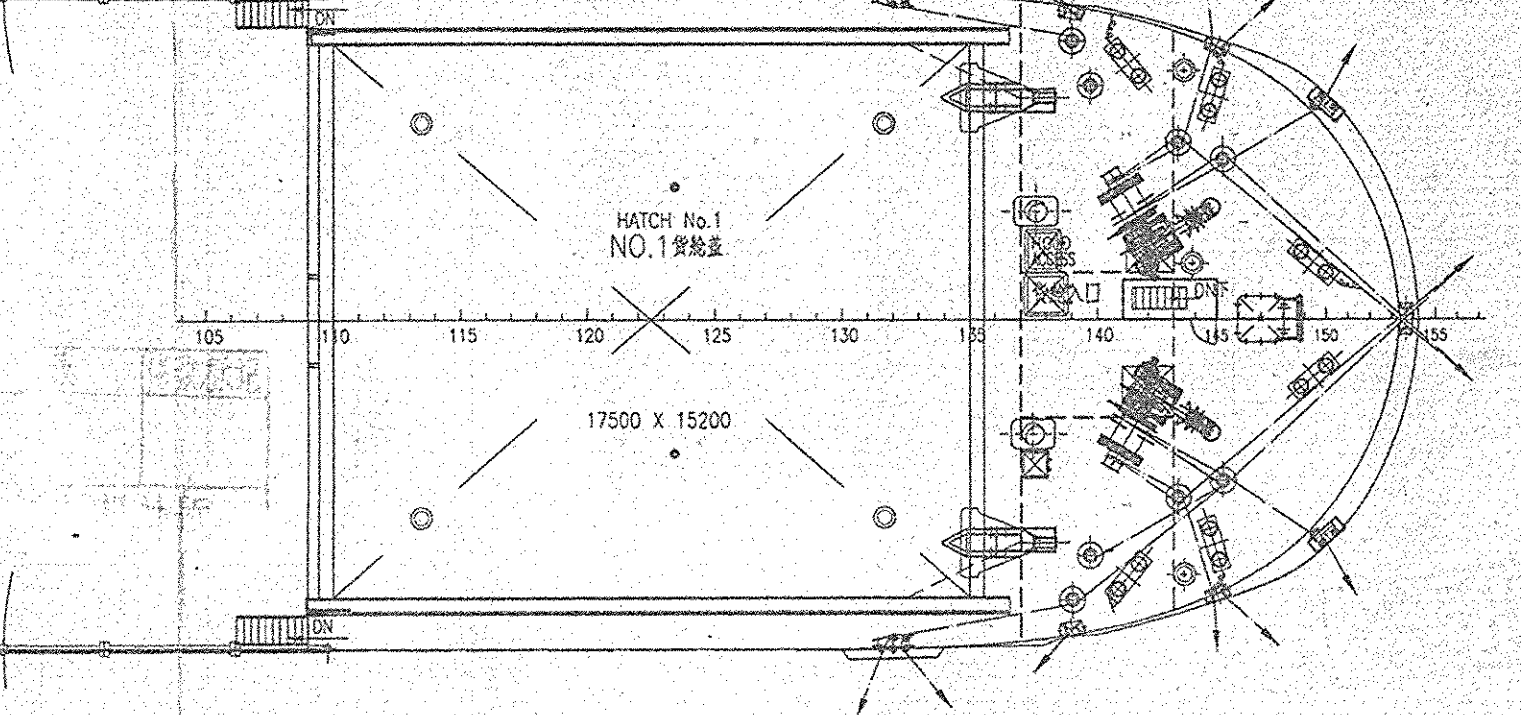
NO.1 DECK  
NO.1甲板



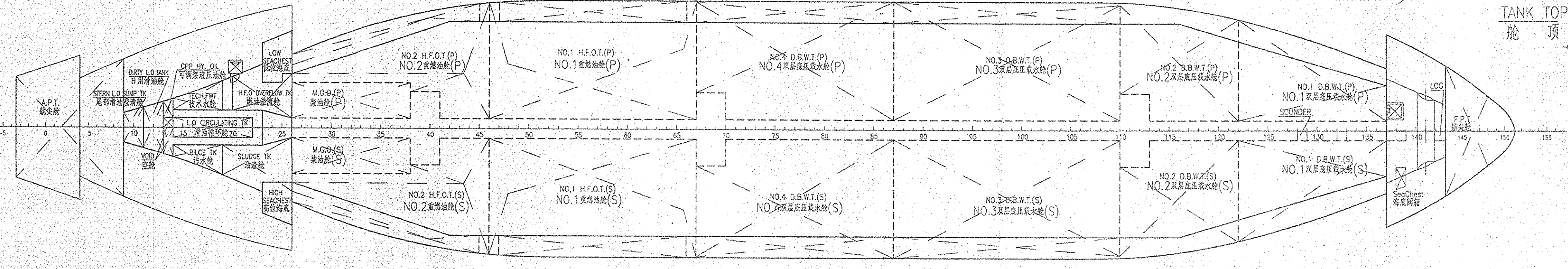
IN HOLDS  
舱内



FORECASTLE DECK  
艏楼甲板



TANK TOP  
舱顶



BUILDER	XINHE SHIPYARD	SHIP'S NO.	
DESIGNER	MARINE DESIGN & RESEARCH INSTITUTE OF CHINA	7600DWT MULTI-PURPOSE DRY CARGO SHIP	
GENERAL ARRANGEMENT 总布置图		DETAIL DESIGN	
		M20111.100.002	
		共 1 页 第 1 页	
		MARIC	
		面积: 0.50m²	

电气	设计	修改	日期
舾装	设计	修改	日期
结构	设计	修改	日期
管系	设计	修改	日期
涂装	设计	修改	日期